

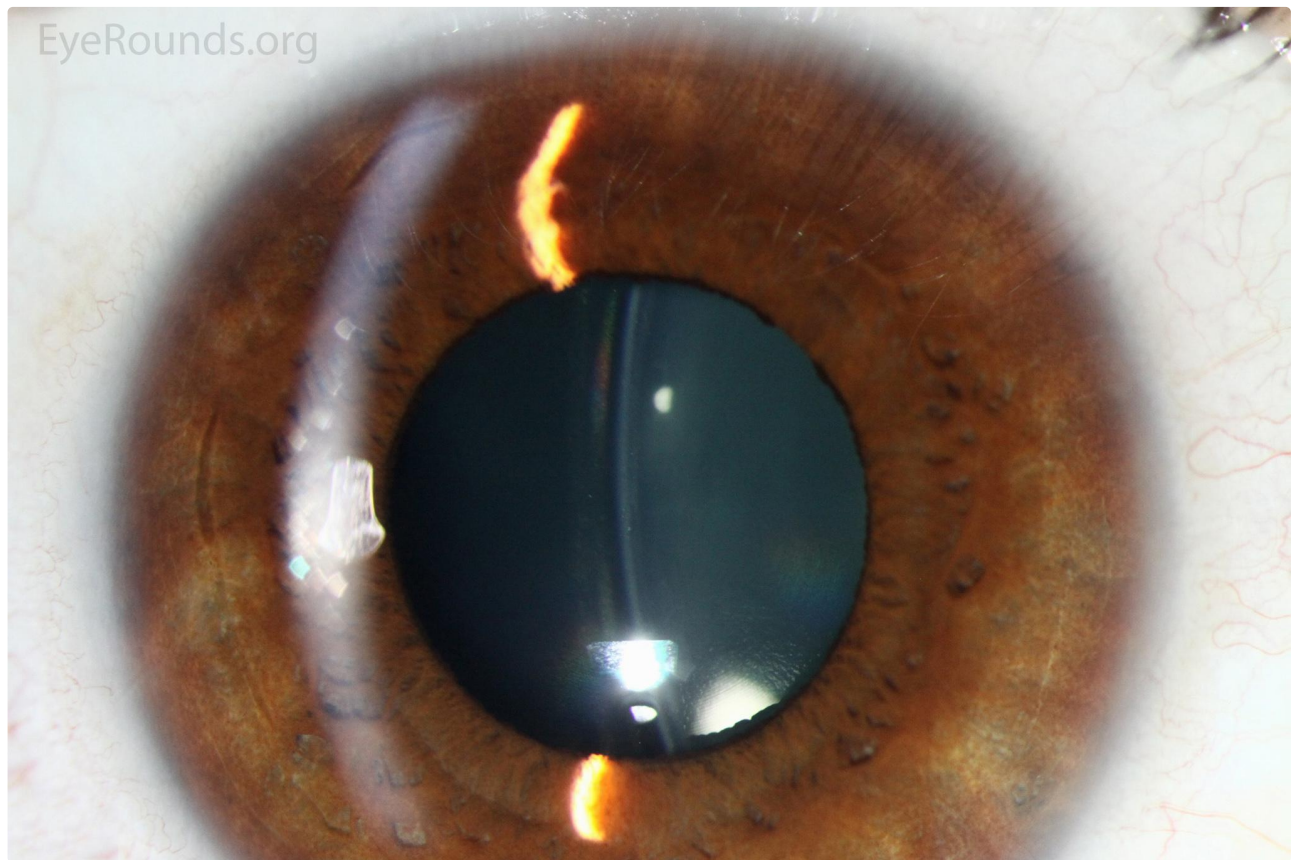
Visian Implantable Collamer Lens (ICL) implant

Category(ies): Cornea, Lens

Contributor: [Jesse Vislisel, MD](#), [Tressa Larson, MA, OD](#)

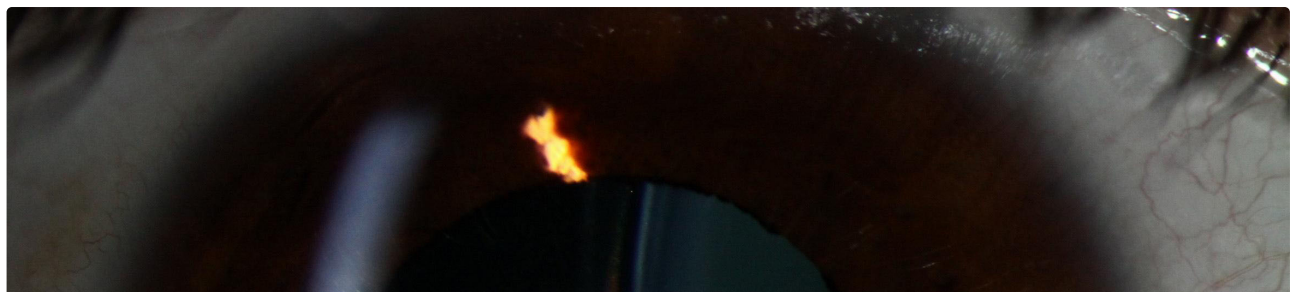
Photographer: Brice Critser, CRA

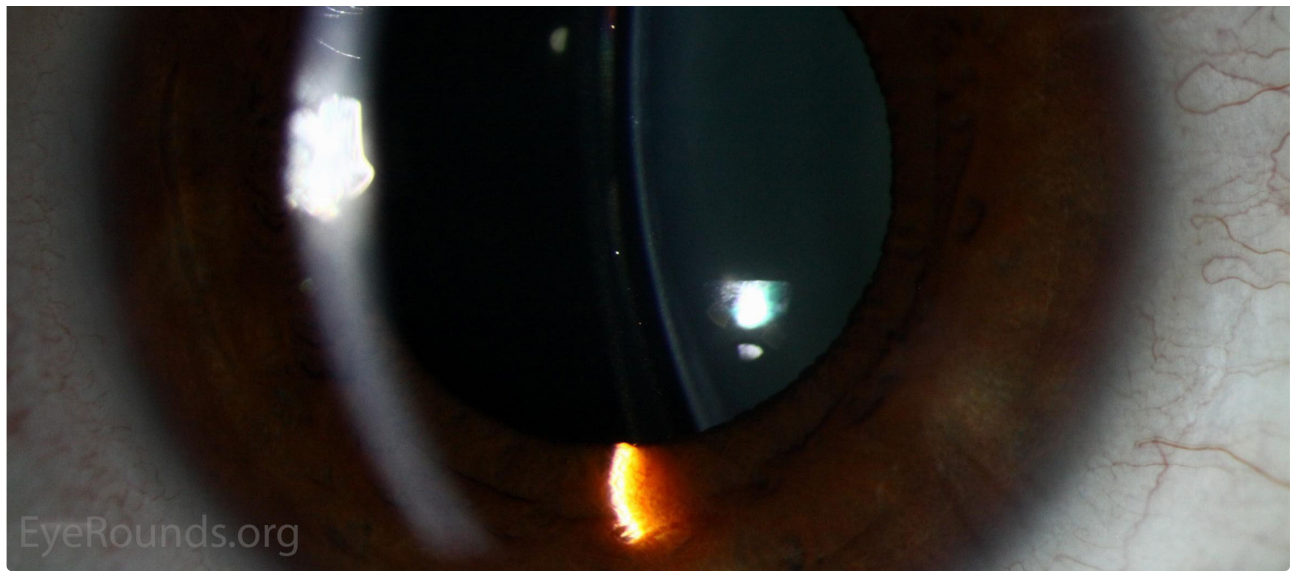
The Visian Implantable Collamer Lens (ICL) is a sulcus-supported phakic intraocular lens implant designed to be placed in the posterior chamber between the iris and natural crystalline lens. These photographs show the appearance of a Visian ICL used to correct myopia. The implanted lens can be seen in the slit beam (white arrow) just anterior to the natural crystalline lens (blue arrow). Read the [related case report](#) for more information about phakic intraocular lenses.



 Enlarge

 Download





[Enlarge](#)

[Download](#)

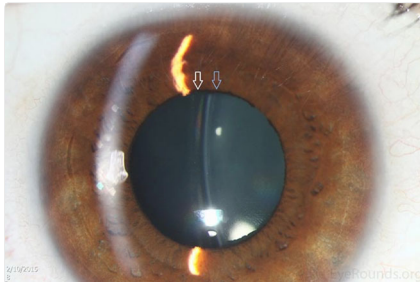
Image Permissions:



Ophthalmic Atlas Images by [EyeRounds.org](#), [The University of Iowa](#) are licensed under a [Creative Commons Attribution-NonCommercial-NoDerivs 3.0 Unported License](#).



Related Articles



[Related Case: Phakic intraocular lenses for high myopia](#)

Address

University of Iowa
Roy J. and Lucille A. Carver College
of Medicine
Department of Ophthalmology and
Visual Sciences
200 Hawkins Drive
Iowa City, IA 52242

Legal

Copyright © 2019 The University of
Iowa. All Rights Reserved
Report an issue with this page
Web Privacy Policy |
Nondiscrimination Statement

Related Links

Cataract Surgery for Greenhorns
EyeTransillumination
Gonioscopy.org
Iowa Glaucoma Curriculum
Iowa Wet Lab
Patient Information
Stone Rounds
The Best Hits Bookshelf

EyeRounds Social Media

Follow



Receive notification of new cases,
sign up here
Contact Us

